

Cello

The Magic of Music Theory

Pre-Reading B Printables

Kristin Campbell

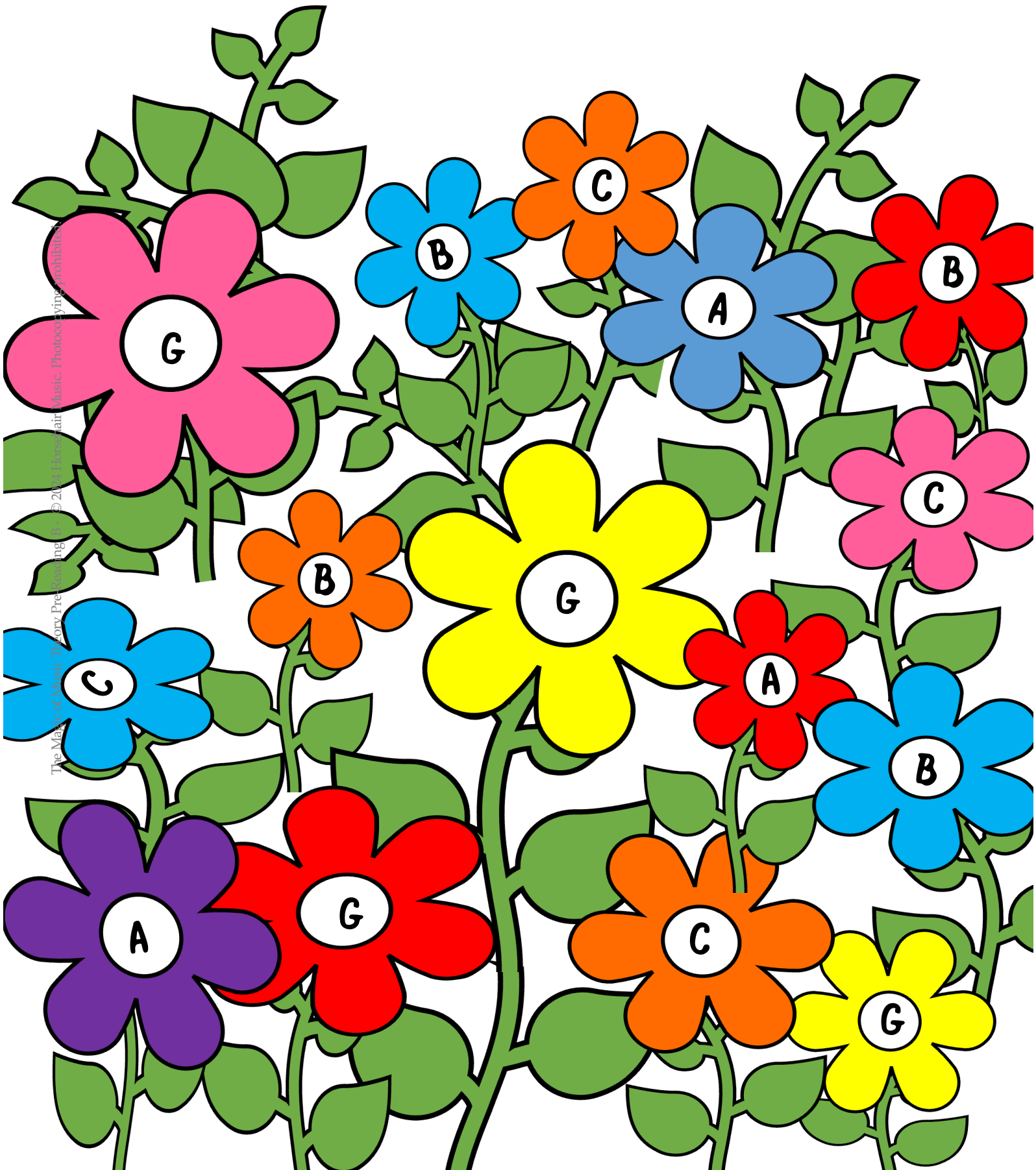


Horsehair Music
Navarre, Florida
horsehairmusic.com

Copyright © 2024 Kristin Campbell. All rights reserved. Printed in U.S.A.
This work cannot be reproduced in any form: print, digital, or recorded, in any part,
or the whole without written permission from the copyright holder.

Pre-Reading B Violin ISBN 978-1-959514-09-1; Library of Congress Number: 2024909186
Pre-Reading B Viola ISBN 978-1-959514-10-7; Library of Congress Number: 2024909198
Pre-Reading B Cello ISBN 978-1-959514-11-4; Library of Congress Number: 2024909201

PICK A DAISY



The Music of Learning Theory. Pre-writing © 2011. All rights reserved. Photocopying prohibited.

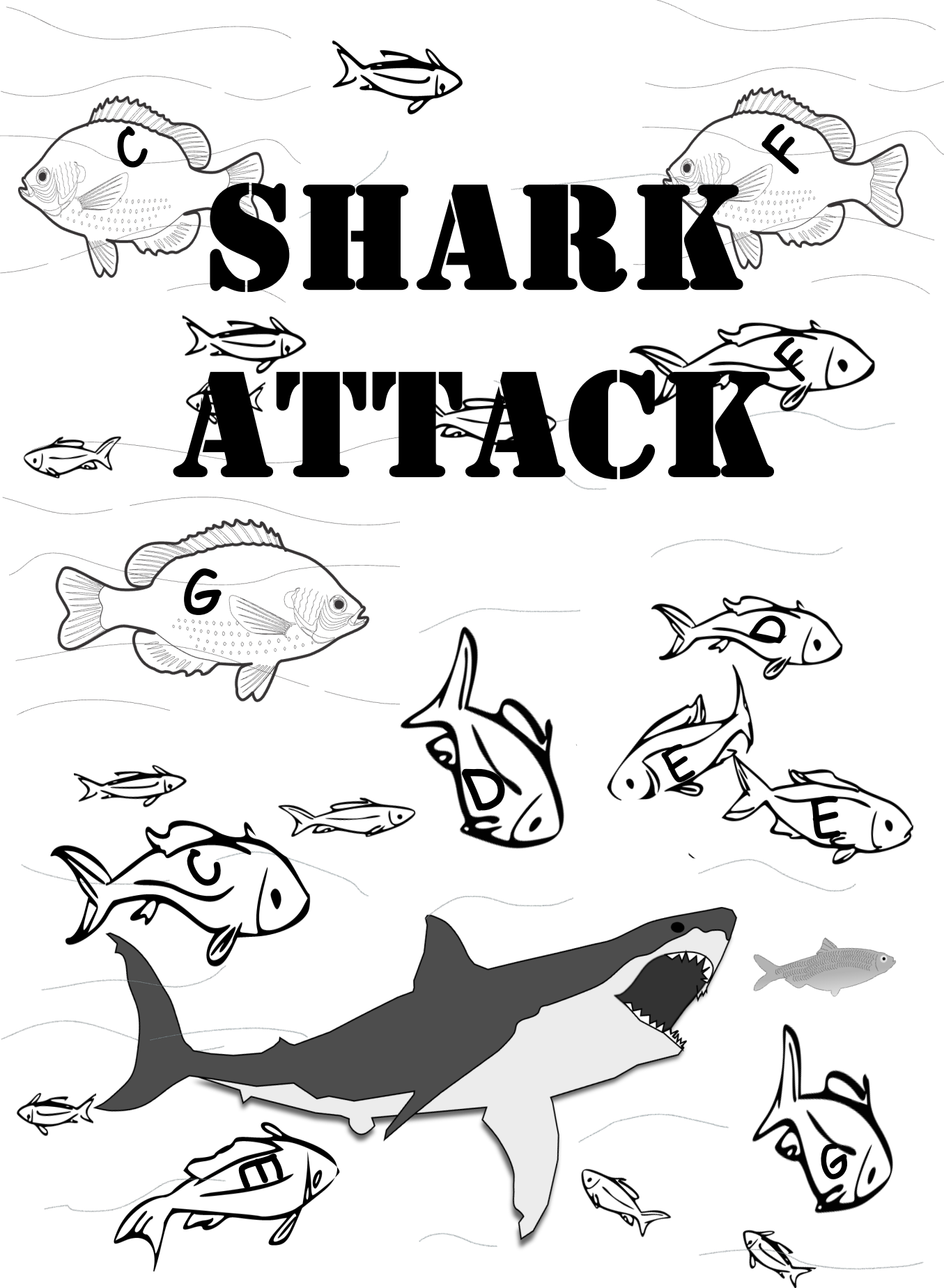
What do you hear? #2



Place a coin in each circle. If the notes you hear go up, push a coin up onto the plane taking off. If the notes you hear go down, push a coin down to the plane landing.

The Magic of Music Theory Pre-Reading B - © 2024 Horsehair Music. Photocopying prohibited.





6. Each paint splat is a measure. Count the number of beats in each splat. Write the number for the time signature in the box.

The Magic of Music Theory Pre-Reading B - © 2024 Horsehair Music. Photocopying prohibited.

A green paint splat containing a white box with the number '4' and musical notation: a quarter note followed by two eighth notes.



A yellow paint splat containing a white box with the number '4' and musical notation: a quarter note followed by a half note.

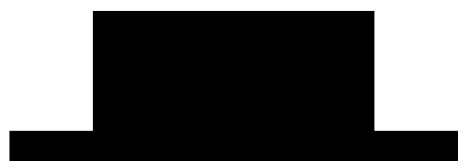
An orange paint splat containing a white box with the number '4' and musical notation: a quarter note followed by a half note.

A blue paint splat containing a white box with the number '4' and musical notation: a half note.

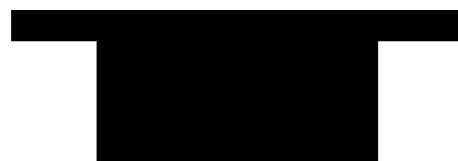
A green paint splat containing a white box with the number '4' and musical notation: a quarter note, a half note, and a quarter note.



3



4



Half Rest



Quarter Rest



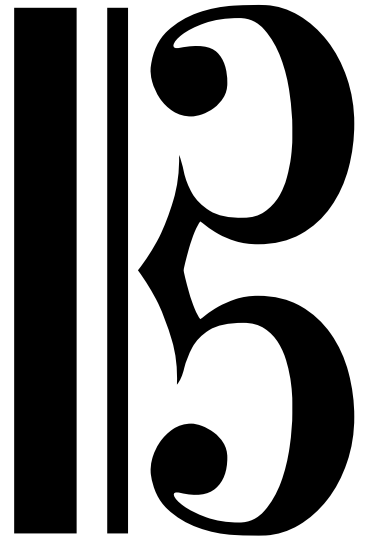
Whole Rest



Time Signature

4 Beats in every
measure.

A 4 on the bottom
means the quarter
note gets 1 beat.



**3
4**



Alto Clef

Treble Clef

Treble = High

Bass Clef

Time Signature

3 Beats in every
measure.

Bass = Low

A 4 on the bottom
means the quarter
note gets 1 beat.