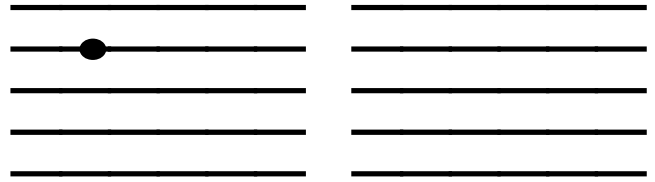


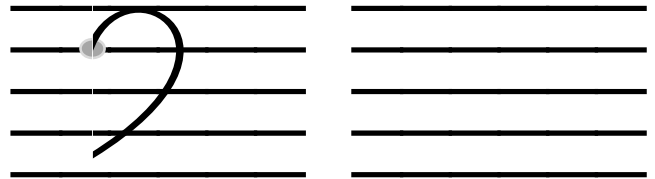
# How to Draw a Bass Clef

1. Draw each step in the empty staff.

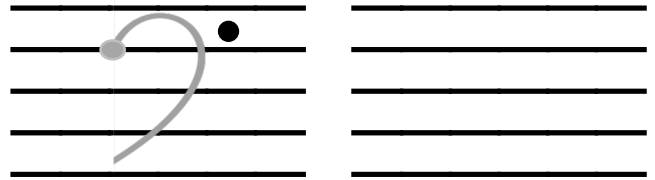
**Step 1:** Draw a big dot on line 4.



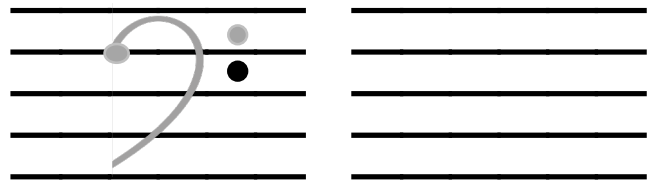
**Step 2:** Draw half of a heart starting on the dot, ending in space 1, but but not touching line 1.



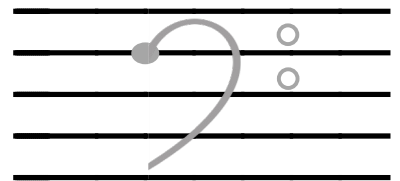
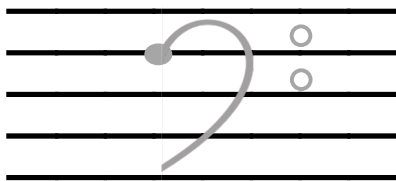
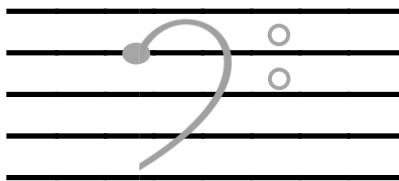
**Step 3:** Draw a dot on the right side in space 4.



**Step 3:** Draw a dot on the right side in space 3.



2. Trace a bass clef on each staff below.



3. Draw a bass clef on each staff.

