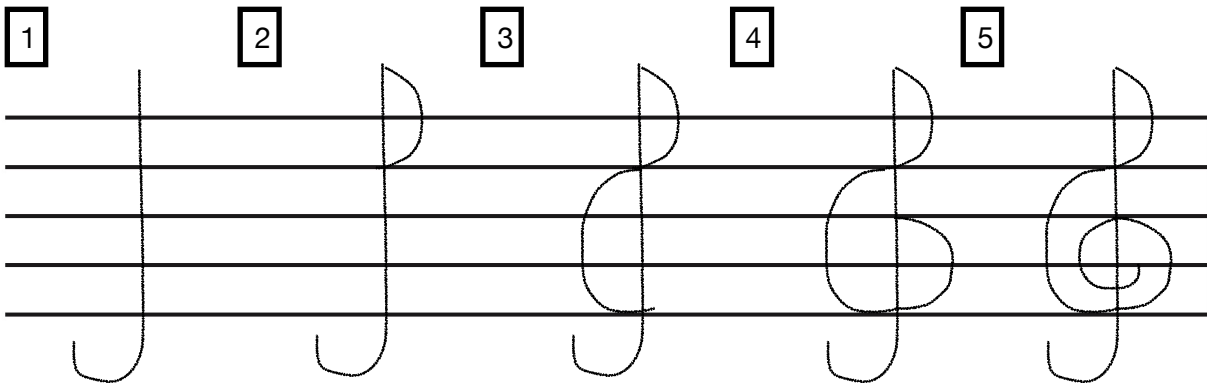


# Drawing a Treble Clef

The word **treble** means *high*. We use a symbol called a **treble clef** to write the high notes on the staff. Sometimes it's called the "G clef" because it circles around the G-line.

1. To draw a treble clef. First we will draw a **VERY TALL J**.
2. Then draw a **Capital D** from the top of the J to touch line 4.
3. Then draw a **BIG C**, from line 4 to touch the "tall J" at line 1.
4. Draw another **BIG Capital D** from the bottom of line 1 to touch line 3.
5. Then curl a **little C** around line 2.



Practice drawing some of your own.

---

---

---

---

---

---

---

---

---

---