

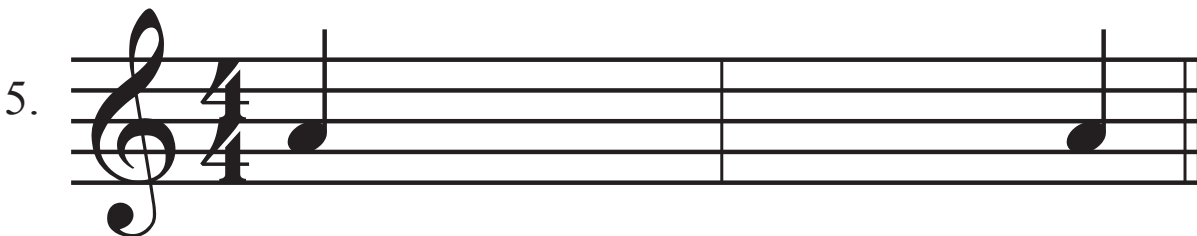
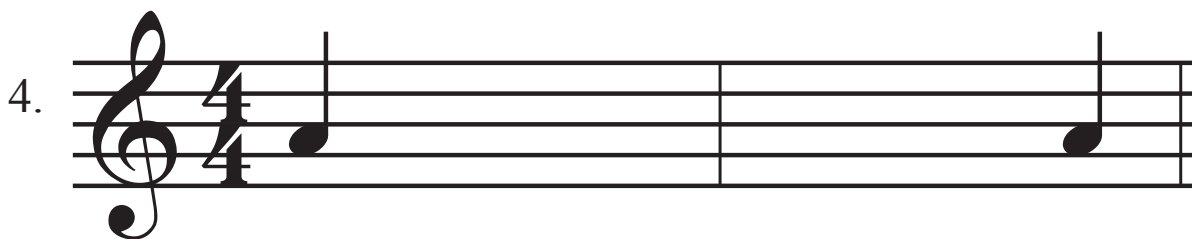
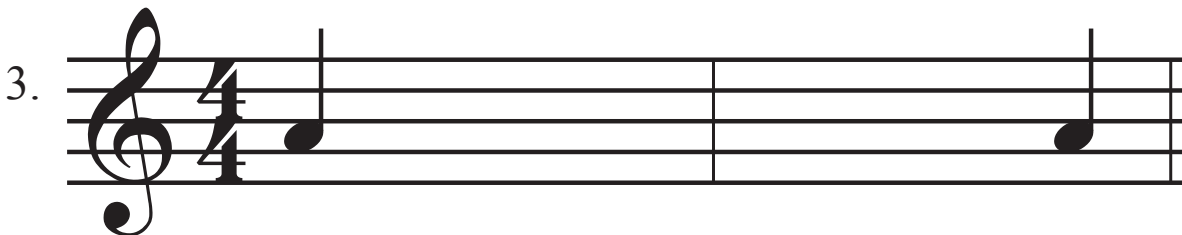
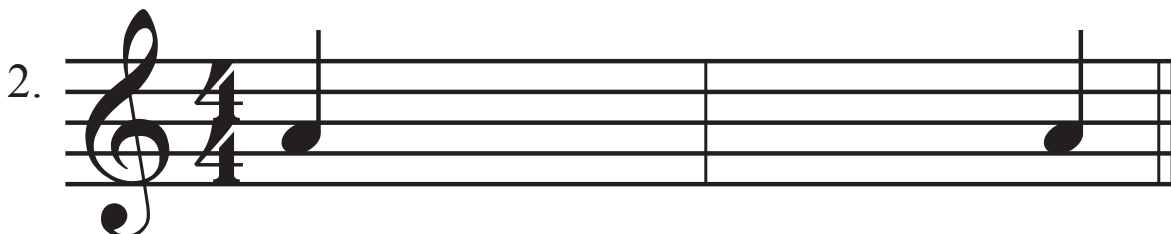
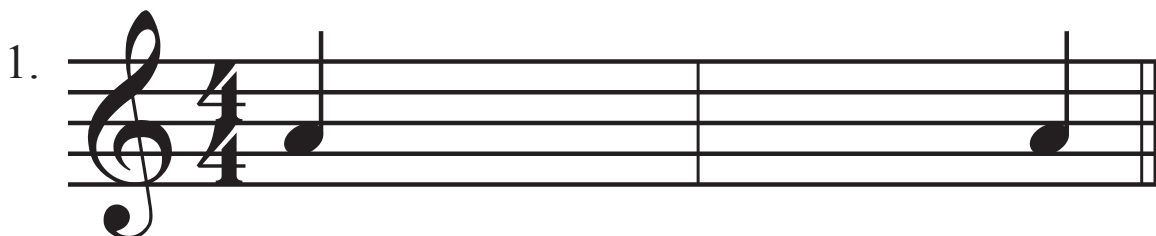
# Be A Composer



- Do one line each day.
- Using A, B, C#, D or E - write 3 quarter notes in each measure to create your own patterns. We will start on A and end on A. Don't forget to write your sharp on the left of the notehead!



- After you have composed your pattern, Play and say the letters out loud while you play



Extra credit: Make up words to go with your pattern. Write one word or syllable under each note. Then play and sing the words.