

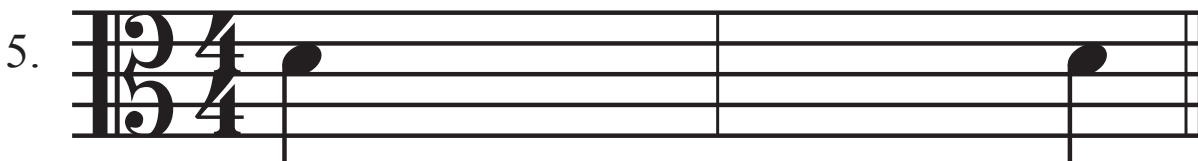
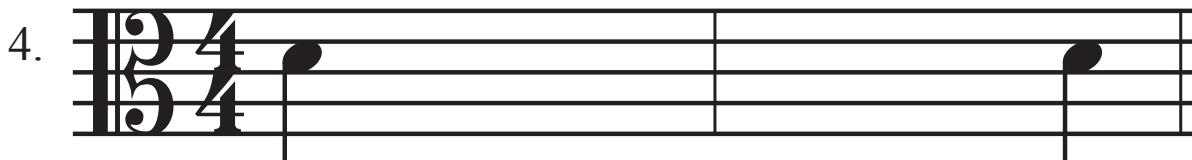
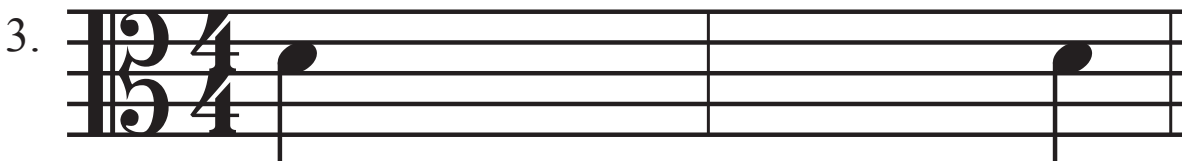
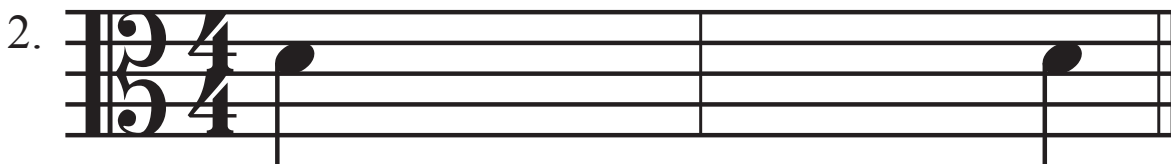
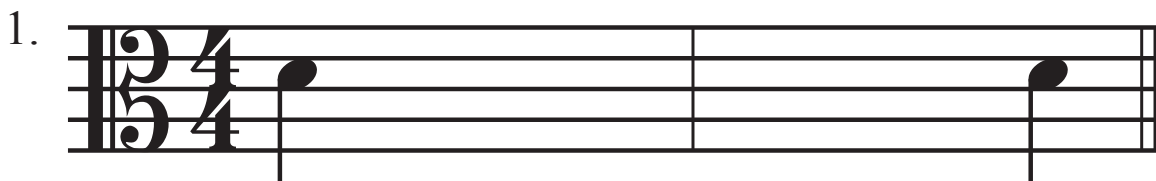
Be A Composer



- Do one line each day.
- Using D, E, F#, G or A - write 3 quarter notes in each measure to create your own patterns. We will start on D and end on D. Don't forget to write your sharp on the left of the notehead!



- After you have composed your pattern, Play and say the letters out loud while you play



Extra credit: Make up words to go with your pattern. Write one word or syllable under each note. Then play and sing the words.